

11240
PLAYA
COURT
Culver City

FOR SALE/LEASE

CREATIVE COMPOUND
PRODUCTION STUDIO
SHOWROOM/WAREHOUSE



ZACUTO GROUP
COMMERCIAL REAL ESTATE

11240 PLAYA COURT *Culver City*

Zacuto Group is pleased to bring to market a unique creative compound within an exclusive media district of Culver City.

Surrounded by acclaimed studios and buzzing companies, Playa Court is a hidden enclave in one of Los Angeles' most desirable locations.

LISTING TEAM



JAKE ZACUTO

Managing Director

310.469.9012

jake@zacutogroup.com

BRE #01377441

JACKIE LUBRANO

Senior Vice President

267.278.0443

jackie@zacutogroup.com

BRE #02024601

DETAILS

11240 PLAYA COURT
CULVER CITY
CALIFORNIA 90230

BUILDING SIZE
14,503 SF

LOT SIZE
23,522 SF

SALE PRICE
CALL FOR GUIDANCE

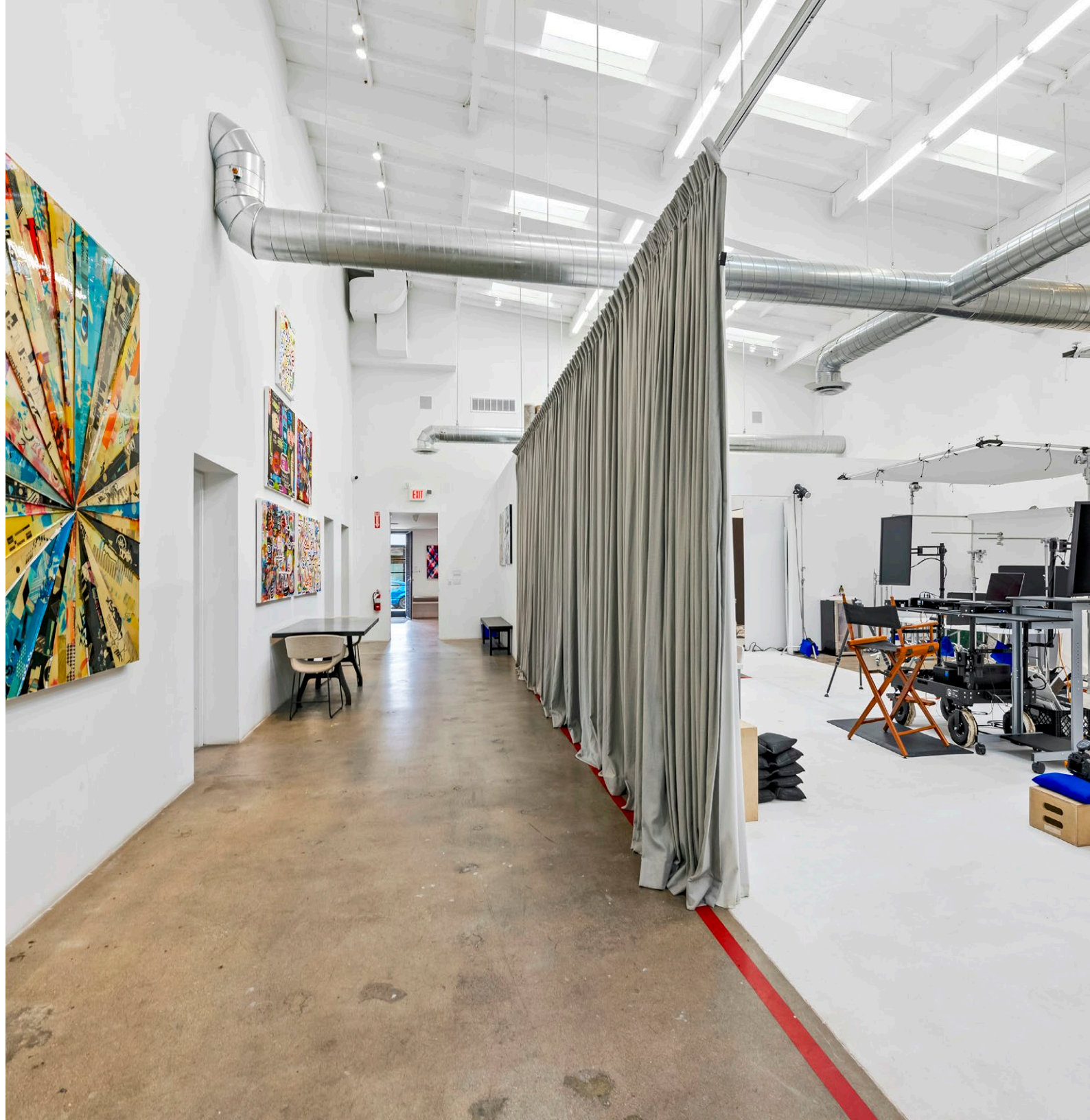
LEASE RATE
\$3.95/SF MG

LEASE SIZE
3,000 - 14,503 SF

TURN KEY CREATIVE COMPOUND

Big and bright sun filled building with skylights. Property offers a mix of private offices, reception /lobby, conference rooms, full kitchen, open spaces and a back warehouse.

Flexible layout for multiple configurations and uses



DETAILS

11240 PLAYA COURT
CULVER CITY
CALIFORNIA 90230

PARKING

Gated lot + abundant street

POWER

1200AMP, 480 V, 3 phase

CEILING HEIGHT

12 - 20ft

OUTDOOR AMENITIES

Expansive garden & paved spaces

MODERN + RENOVATED

Built in 1965, and renovated in 2021 with new roof, 3 HVAC units, and upgraded lighting systems.

PRIVATE PARKING

On-site gated parking for up to 8 cars + abundant street parking and striped spaces in front of the property

IN GOOD COMPANY

The low profile brick building sits along an exclusive corridor neighboring Sony Studios, Jamm Visual Productions, Beyond Yoga, and Tiktok HQ



SALE / LEASE

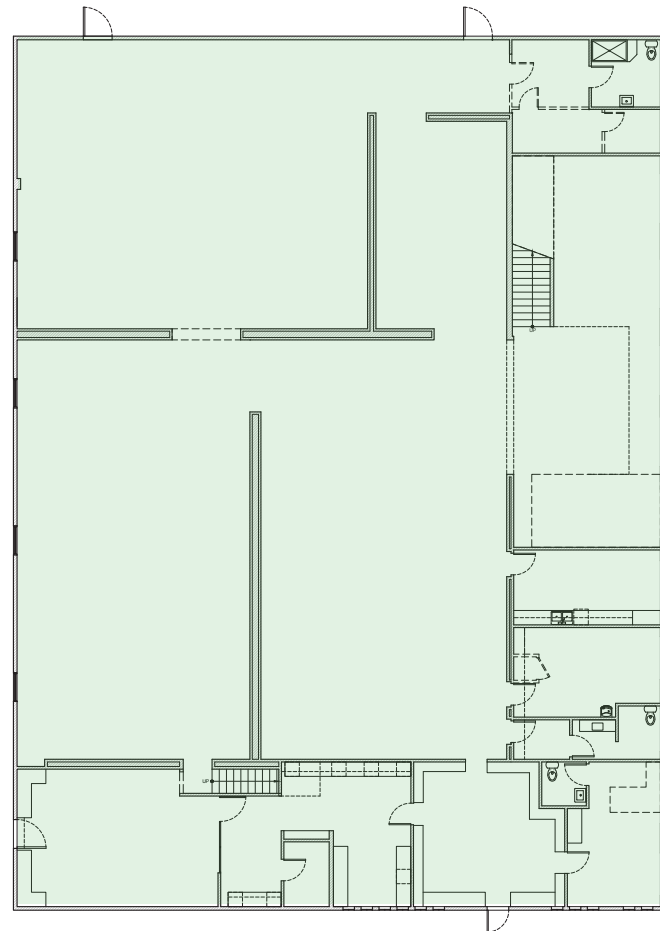
TOTAL SF: 14,503 SF

GROUND FLOOR:

11,011 SF

2ND FLR + MEZZANINE:

3,492 SF

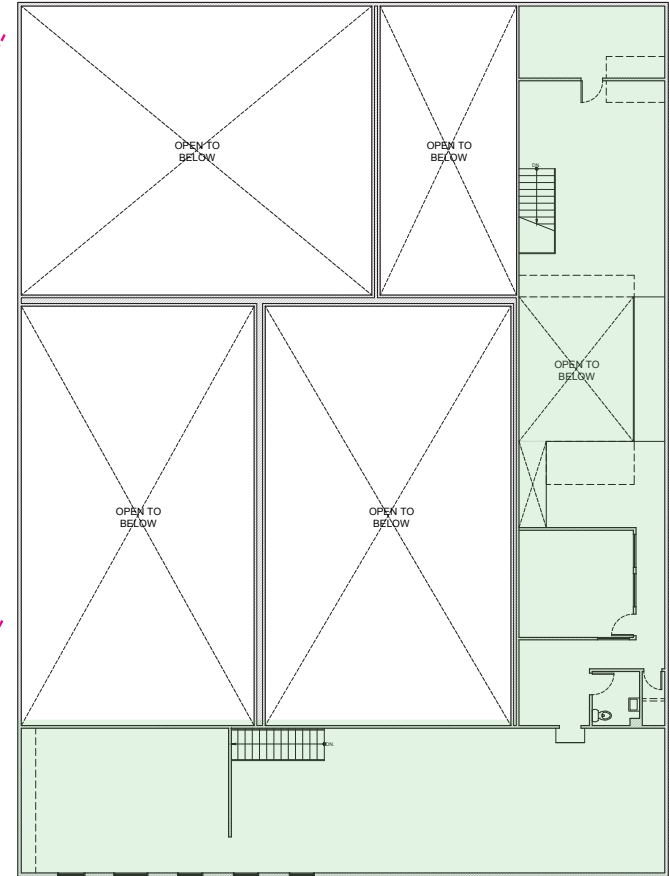


100 FT

PLAYA COURT

GROUND FLOOR

11,011 SF



2ND FLOOR / MEZZANINE

3,492 SF



LAX

TikTok

SONY PICTURES COSTUME DEPT

PUNCH STUDIOS

11240
PLAYA
COURT
Culver City

PLAYA STUDIOS

JAMM

BEYOND YOGA



SALE / LEASE

11240 PLAYA COURT, CULVER CITY, CALIFORNIA



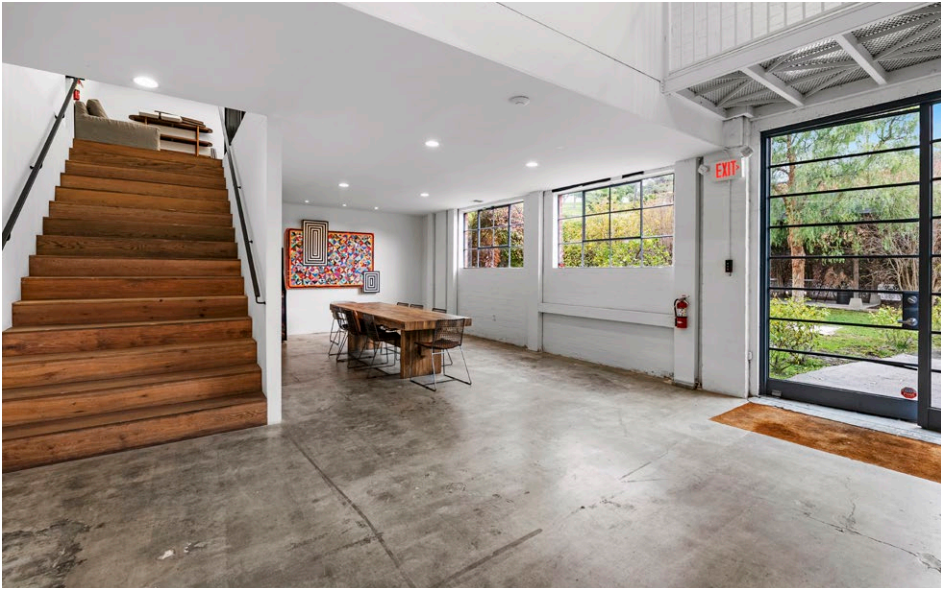
SALE / LEASE

11240 PLAYA COURT, CULVER CITY, CALIFORNIA



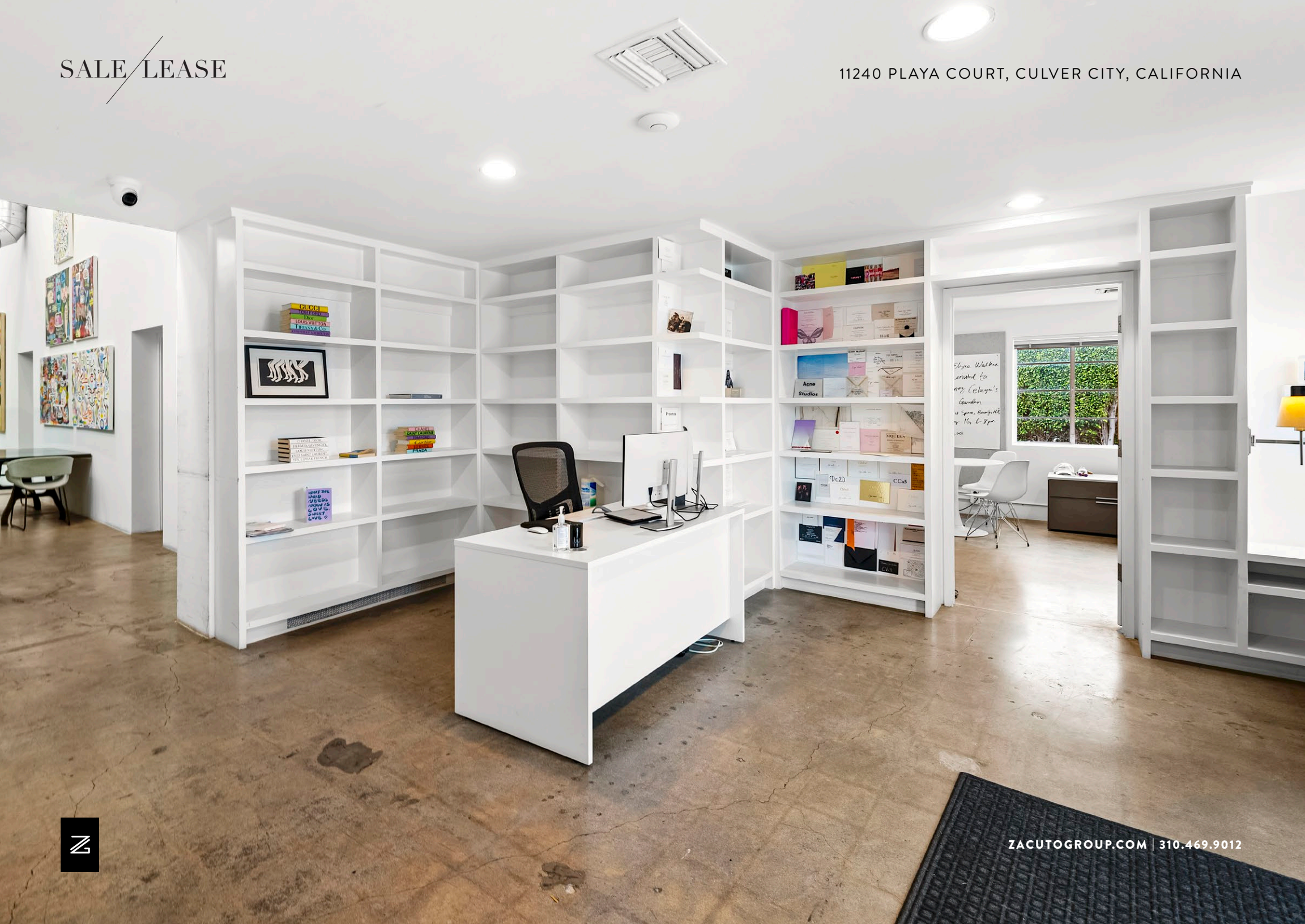
SALE / LEASE

11240 PLAYA COURT, CULVER CITY, CALIFORNIA



SALE / LEASE

11240 PLAYA COURT, CULVER CITY, CALIFORNIA

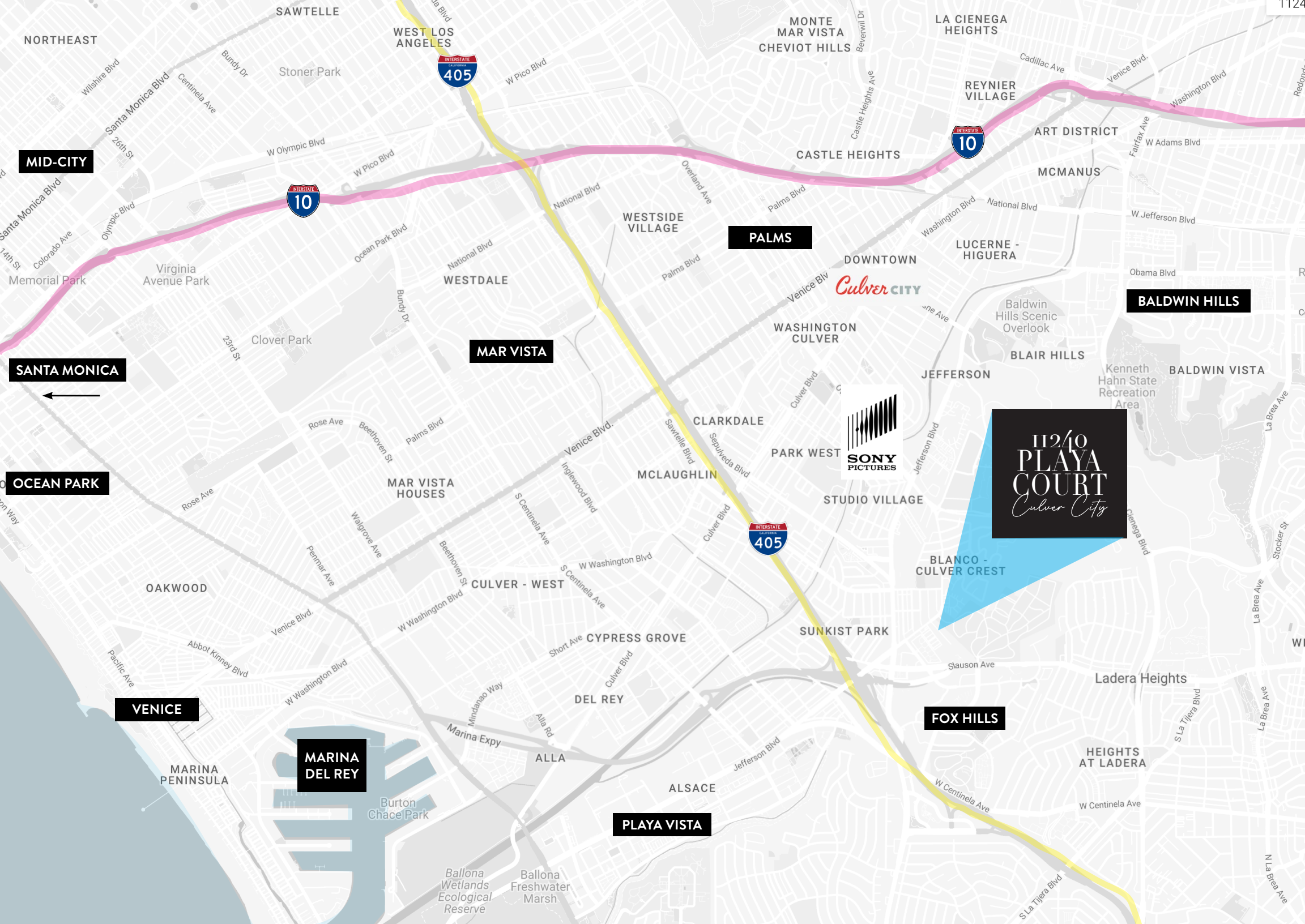


SALE / LEASE



11240
PLAYA
COURT
Culver City





MID-CITY

SANTA MONICA

OCEAN PARK

VENICE

MARINA DEL REY

PLAYA VISTA

FOX HILLS

MAR VISTA

PALMS

BALDWIN HILLS

11240
PLAYA
COURT
Culver City

Culver CITY



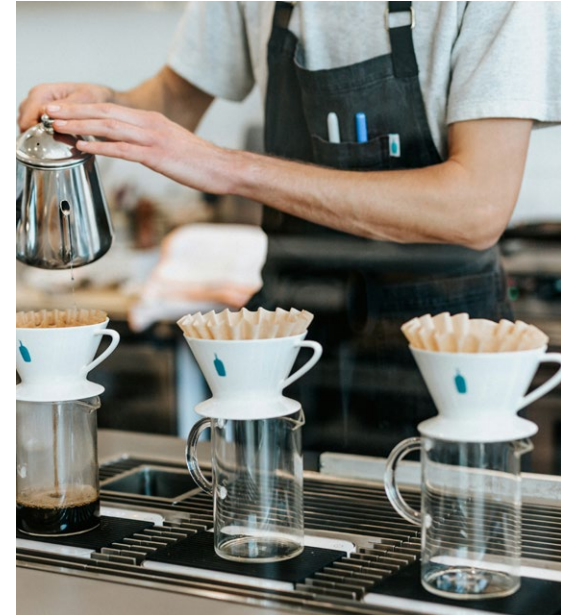
EXCELLENT NEIGHBORHOOD AMENITIES



📍 JON & VINNY'S



📍 WESTFIELD CULVER CITY



📍 BLUE BOTTLE COFFEE



📍 TOCAYA ORGANIC



📍 HOWARD HUGHES ENTERTAINMENT



📍 TRADER JOES



11240
PLAYA
COURT
Culver City



JAKE ZACUTO

Managing Director

310.469.9012

jake@zacutogroup.com

BRE #01377441

JACKIE LUBRANO

Senior Vice President

267.278.0443

jackie@zacutogroup.com

BRE #02024601

No warranty, express or implied, is made as to the accuracy of the information contained herein. This information is submitted subject to errors, omissions, change of price, rental or other conditions, withdrawal without notice. All parties who receive this material should not rely on it, but should use it as a starting point of analysis, and should independently confirm the accuracy of the information contained herein through a due diligence review of the books, records, files and documents that constitute reliable sources of the information described herein. Logos and images are for identification purposes only and may be trademarks of their respective companies. All terms provided are approximate. Parties to verify. 3/2024

ZACUTOGROUP.COM | 310.469.9300

