

FOR LEASE



1259
N LA BREA
AVENUE
WEST HOLLYWOOD

LEASE DETAILS

1259 N LA BREA AVENUE
WEST HOLLYWOOD, 90038

RATE

Call for price

TERM

Negotiable

SIZE

1,800 SF

PARKING

3 spaces included

- » High visibility retail space located at the high traffic intersection of La Brea Ave & Fountain Ave, just steps to Ralphs and Starbucks
- » Open space with flexible configurations
- » Includes plenty of back room storage featuring a mezzanine, small kitchenette room, bathroom, and sink area.
- » 3 rear parking spaces included



LISTING TEAM



JACKIE LUBRANO

Vice President

310.469.9376

jackie@zacutogroup.com

BRE #02024601

BEN KHOUBIAN

Director

424.254.3160

ben@zacutogroup.com

BRE #02197728

THE PRIOR

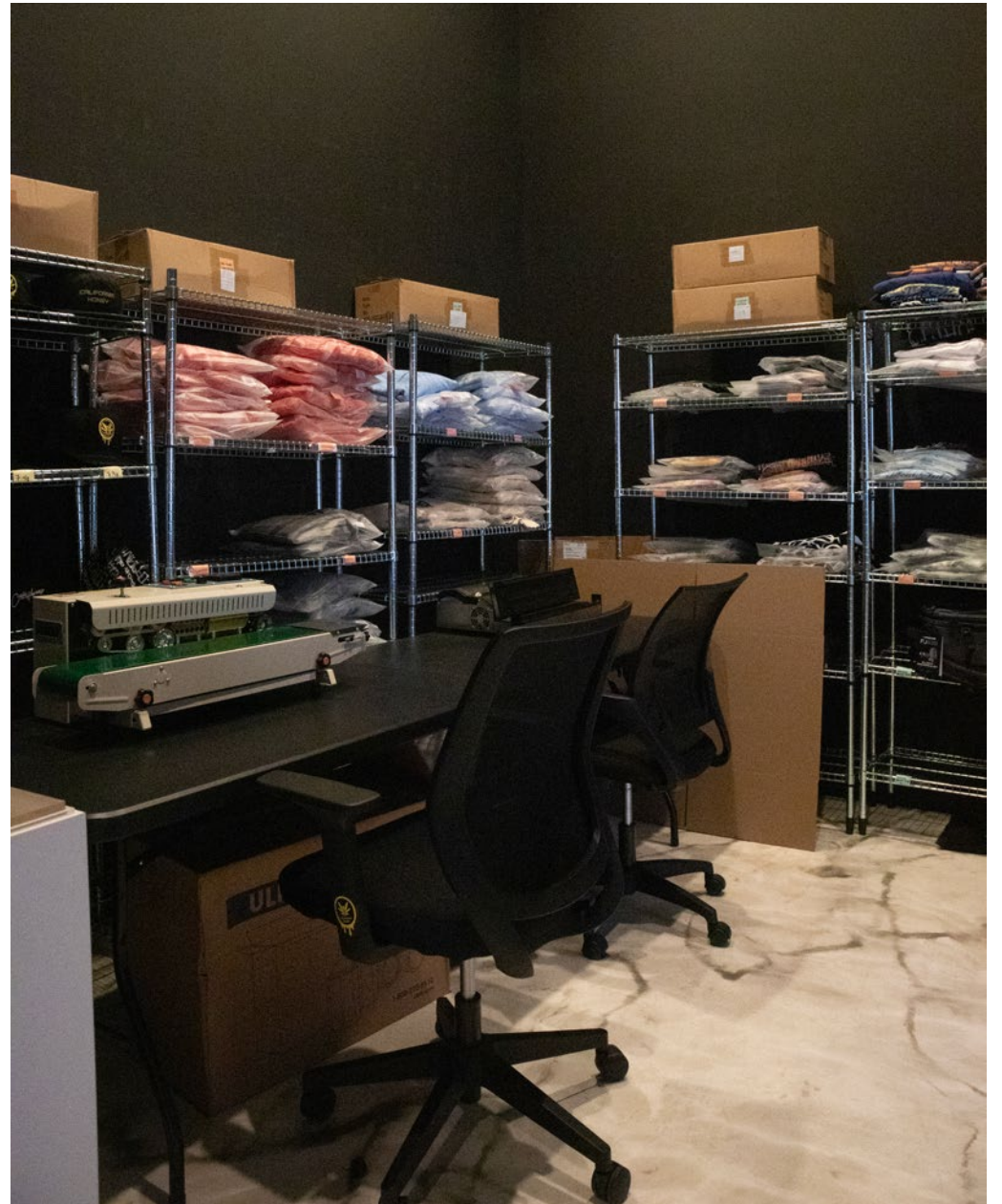
LEASE

1259 N LA BREA AVENUE, WEST HOLLYWOOD CA 90038



INTERIOR

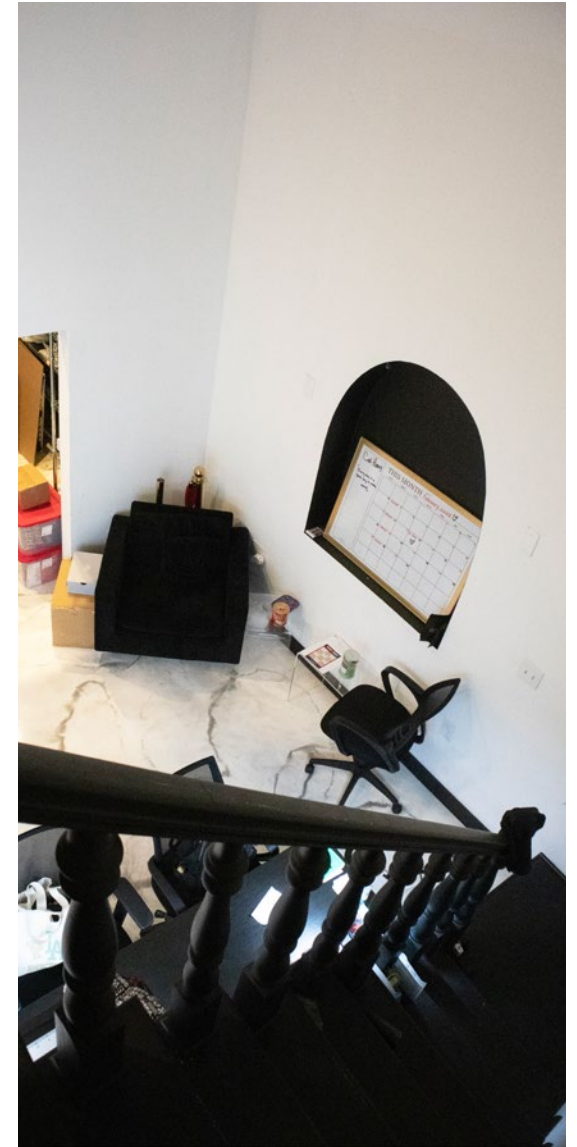
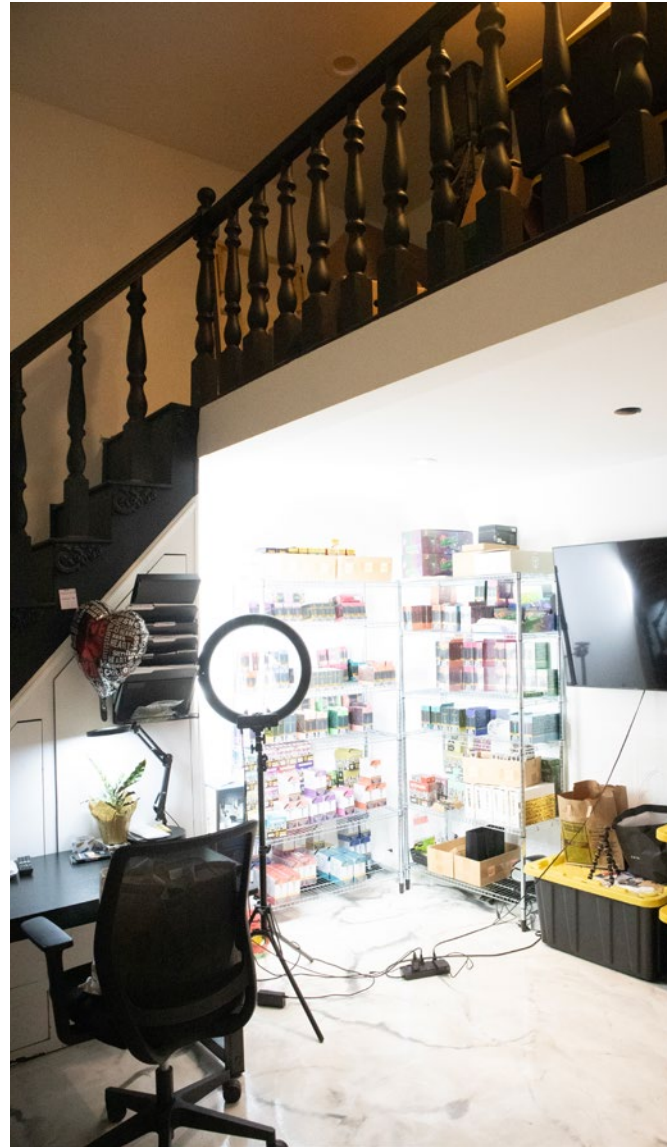
LEASE 1259 N LA BREA AVENUE, WEST HOLLYWOOD CA 90038



MEZZANINE

LEASE

1259 N LA BREA AVENUE, WEST HOLLYWOOD CA 90038

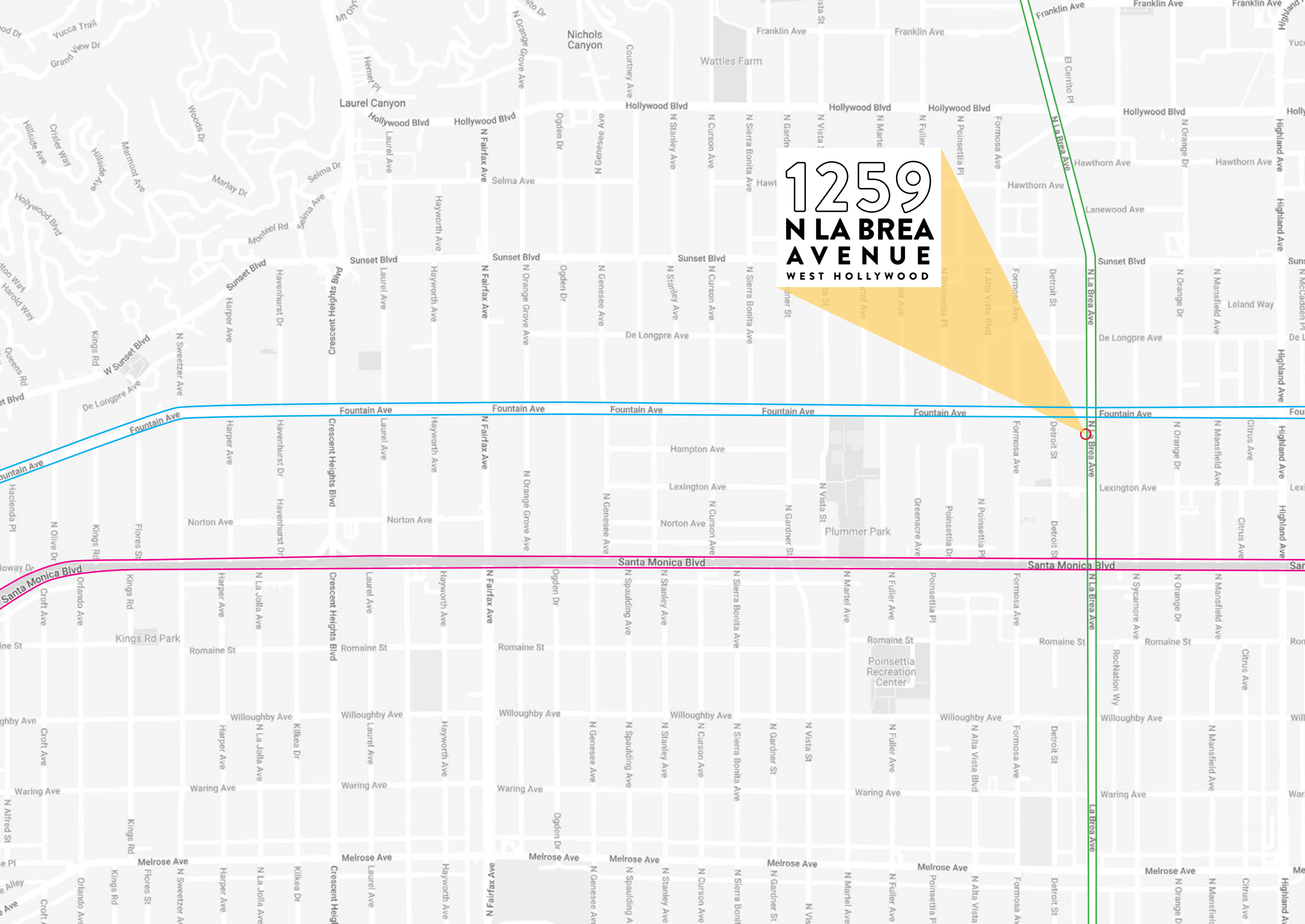


LEASE

1259 N LA BREA AVENUE, WEST HOLLYWOOD CA 90038



1259
N LA BREA
AVENUE
WEST HOLLYWOOD



1259

N LA BREA

AVENUE

WEST HOLLYWOOD



ZACUTO GROUP
COMMERCIAL REAL ESTATE

JACKIE LUBRANO

Vice President

310.469.9376

jackie@zacutogroup.com

BRE #02024601

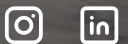
BEN KHOUBIAN

Director

424.254.3160

ben@zacutogroup.com

BRE #02197728



ZACUTOGROUP.COM | 310.469.9300

No warranty, express or implied, is made as to the accuracy of the information contained herein. This information is submitted subject to errors, omissions, change of price, rental or other conditions, withdrawal without notice. All parties who receive this material should not rely on it, but should use it as a starting point of analysis, and should independently confirm the accuracy of the information contained herein through a due diligence review of the books, records, files and documents that constitute reliable sources of the information described herein. Logos and images are for identification purposes only and may be trademarks of their respective companies. All terms provided are approximate. Lessee to verify. 1/2024