



ZACUTO GROUP
COMMERCIAL REAL ESTATE

FOR SALE
42,000 SF
INDUSTRIAL WAREHOUSE
±72,000 SF LOT



5928

GARFIELD AVENUE
COMMERCE, CA

FOR SALE

5928 GARFIELD AVENUE
COMMERCE, CA 90040

Opportunity to acquire highly desirable manufacturing warehouse property in a dynamic Commerce location. Property will be delivered vacant at close of escrow.

BUILDING SIZE

±42,000 SF

APN

6356-018-012

CEILING HEIGHT

18'-26'

PROPERTY TYPE

Industrial/Warehouse

PRICE

\$12,000,000

\$285.71/SF

LOT SIZE

± 72,310 SF / 1.66 acres

POWER

1200 AMPS / 3 phase

LOADING DOORS

7 (4 GL, 3 DH)

- Opportunity Zone
- CMM2 Zoning
- ± 3,600 SF* office
- On-site surface parking
- 20 miles to Port of Long Beach
- Adjacent to the 5 and 710 Freeway
- Potential for Rail Access

Source: Costar



GEHR INDUSTRIES

SUN
PLASTICS, INC.

E.T.E.
EXTREME TRAINING EQUIPMENT

99¢
only
STORES.

5928
GARFIELD AVENUE
COMMERCE, CA

XTRA
LEASE

Z

INTERIOR WAREHOUSE

5928
GARFIELD AVENUE
COMMERCE, CA



5928
GARFIELD AVENUE
COMMERCE CA



EXTERIOR + OFFICE

5928
GARFIELD AVENUE
COMMERCE, CA



DOWNTOWN LOS ANGELES



5928
GARFIELD
AVENUE

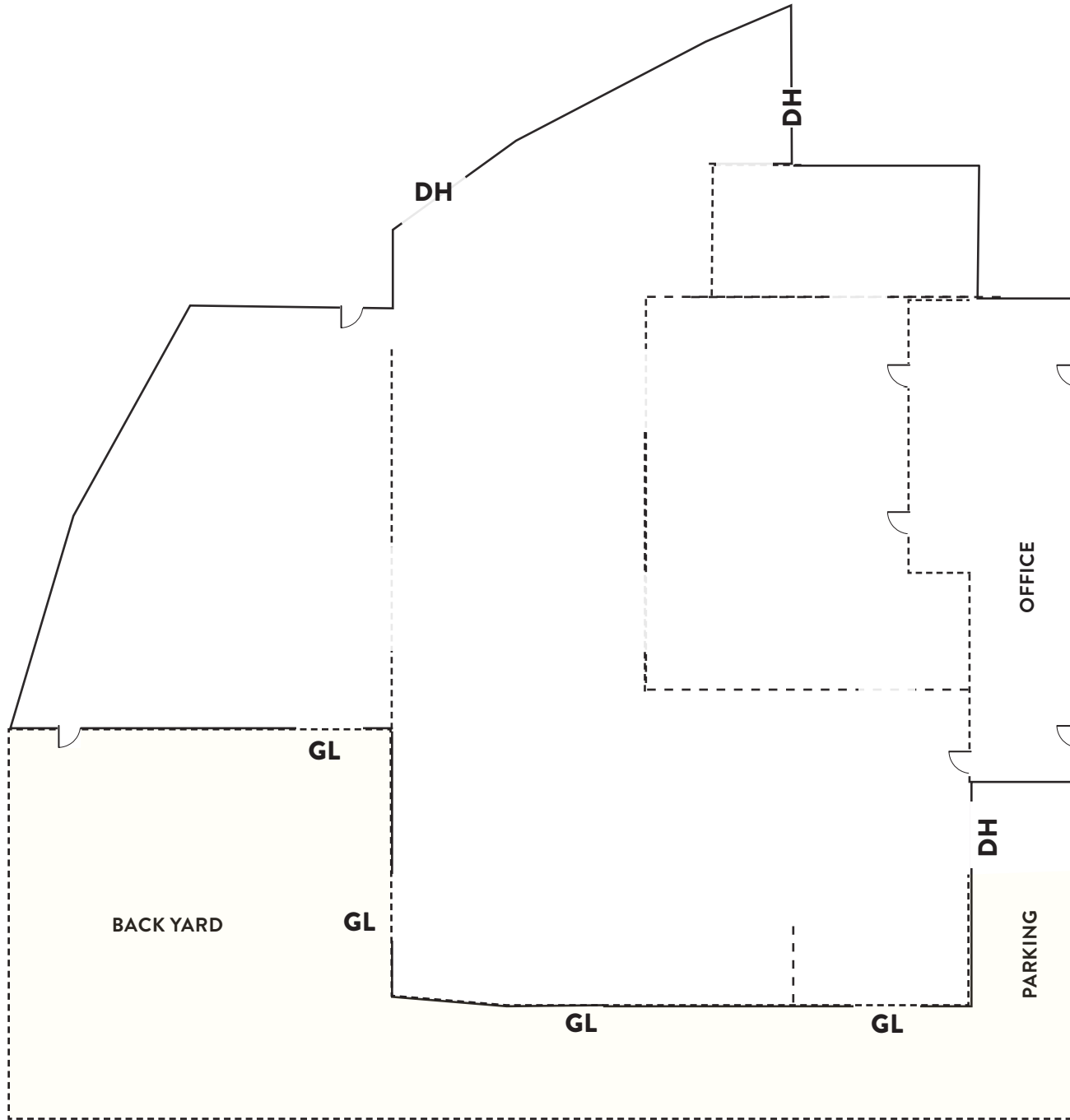




FLOOR PLAN

Not to scale

5928
GARFIELD AVENUE
COMMERCE, CA



5928

GARFIELD AVENUE
COMMERCE, CA 90040

JAKE ZACUTO

Managing Director

310.469.9012

jake@zacutogroup.com

BRE #01377441

CONNOR SEARS

Senior Director

310-469-9398

connor@zacutogroup.com

BRE #02010505

BENJI GRIBNAU

Senior Director

424-322-9303

benji@zacutogroup.com

BRE #02069968

ZACUTO GROUP

COMMERCIAL REAL ESTATE

ZACUTOGROUP.COM | 310-469-9300



No warranty, express or implied, is made as to the accuracy of the information contained herein. This information is submitted subject to errors, omissions, change of price, rental or other conditions, withdrawal without notice. All parties who receive this material should not rely on it, but should use it as a starting point of analysis, and should independently confirm the accuracy of the information contained herein through a due diligence review of the books, records, files and documents that constitute reliable sources of the information described herein. Logos and images are for identification purposes only and may be trademarks of their respective companies. All terms provided are approximate. Buyer to verify. 3/2022