



ZACUTO GROUP
COMMERCIAL REAL ESTATE

739

N. MAIN
STREET

DOWNTOWN LA

CREATIVE
OFFICE

FREE STANDING

CORNER
RETAIL

FOR LEASE

LEASE DETAILS

739 N MAIN STREET
LOS ANGELES, CA 90012

SIZE

2,860 SF

TERM

Negotiable

RATE

\$3.25/SF* MG

PARKING

4-5 spaces
@ \$125/space

HIGH VISIBILITY CORNER BUILDING

Stand-alone creative office, retail,
or showroom space across the street
from Union Station in Downtown LA.

FLEXIBLE SPACE

Open floor plan configurations
possible with a mix of open space,
private areas, and on-site gated
parking.

HIGHLY CREATIVE SPACE

NEW RENOVATION! Light and
bright striking interiors with oversized
casement windows, brick details, high
ceilings and accent lighting.

**Year 1 teaser rate for 3 year deal*



LISTING TEAM



JAKE ZACUTO

Managing Director

310.469.9012

jake@zacutogroup.com

BRE #01377441

ANDREW SINASOHN

Executive Vice President

310.469.9023

andrew@zacutogroup.com

BRE #01951740

GABE HISEM

Senior Director

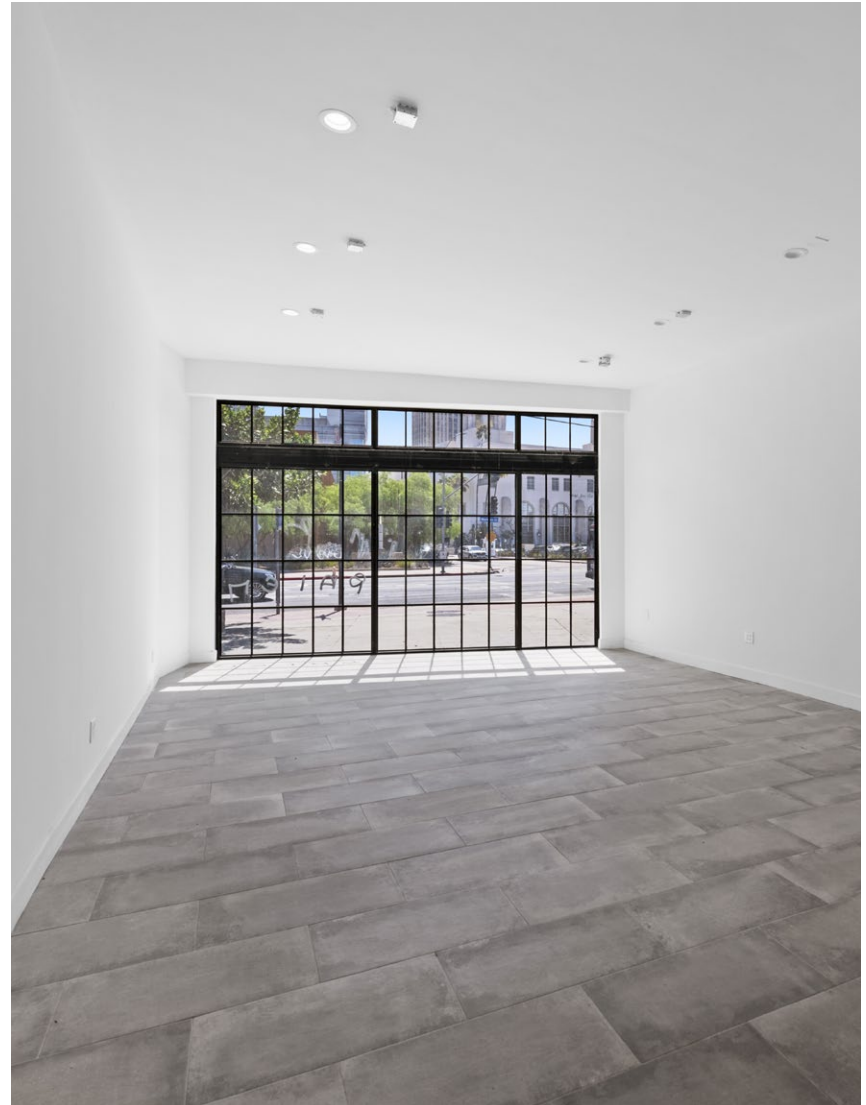
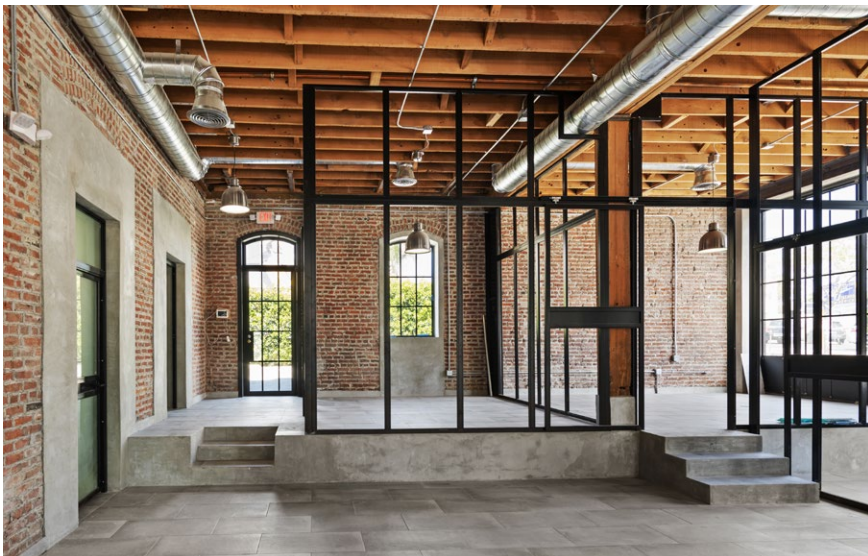
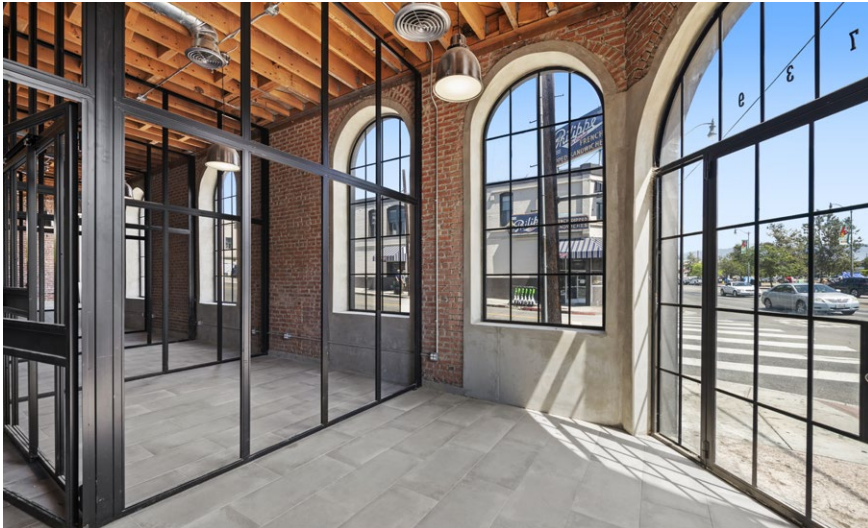
231.631.2327

gabe@zacutogroup.com

BRE #02187347

LEASE

739 N MAIN STREET, LOS ANGELES, 90012





739
N. MAIN
STREET
DOWNTOWN LA

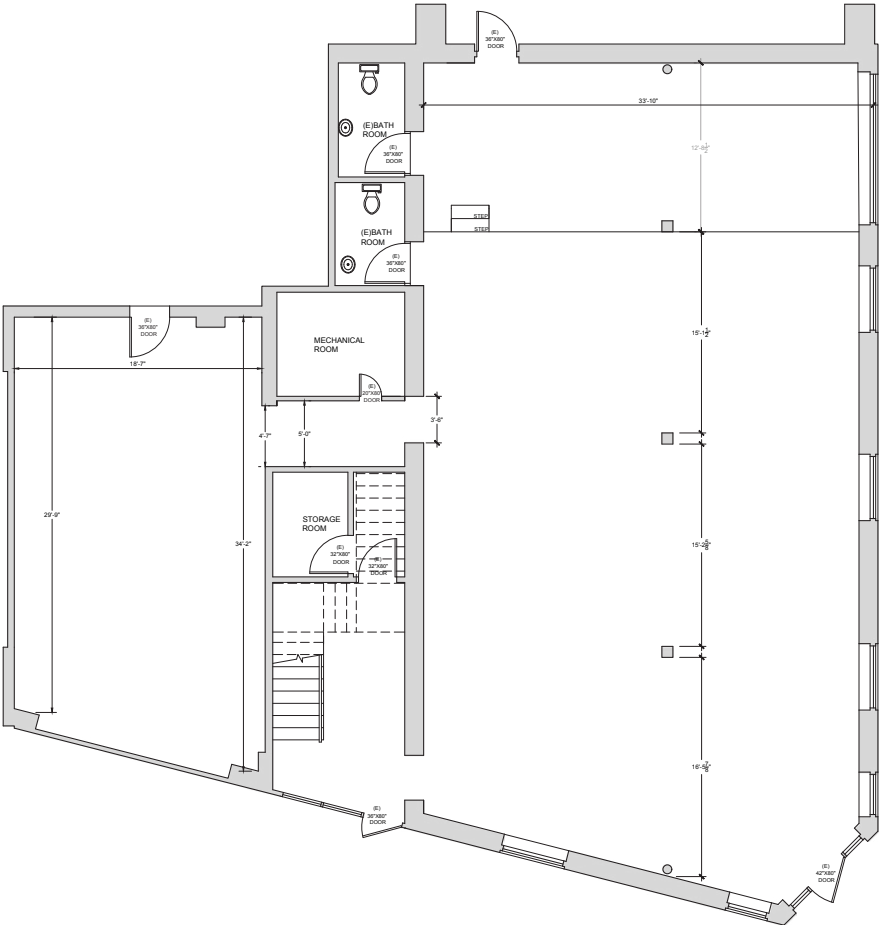
ON-SITE PARKING

739 N MAIN STREET, LOS ANGELES, 90012



FLOOR PLAN

739 N MAIN STREET, LOS ANGELES, 90012





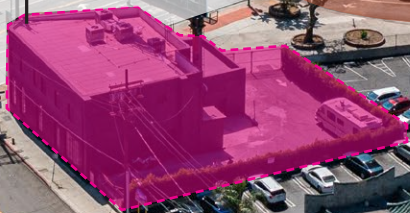
739
N. MAIN
STREET
DOWNTOWN LA



739
N. MAIN
STREET
DOWNTOWN LA

N MAIN ST

N ALAMEDA ST



LOCATION

CENTRAL TO THE BEST DTLA LANDMARKS AND AMENITIES

739 N MAIN STREET, LOS ANGELES, 90012



📍 PHILIPPE THE ORIGINAL / 1001 N ALAMEDA ST



📍 UNION STATION / 800 N ALAMEDA ST



📍 HOWLIN RAY'S HOT CHICKEN / 727 N BROADWAY



📍 LA STATE HISTORIC PARK / 1245 N SPRING ST



📍 MOCA GEFFEN / 152 N CENTRAL AVE



📍 BESTIA / 2121 E 7TH PL



739 N. MAIN STREET DOWNTOWN LA



Howlin Rays



CENTRAL ARRAIGNMENT COURT



THE BROAD

SPRING ST COURTHOUSE

LOS ANGELES CITY HALL

US DISTRICT COURT JURY ASSEMBLY

STANLEY MOSK COURTHOUSE

HALL OF JUSTICE

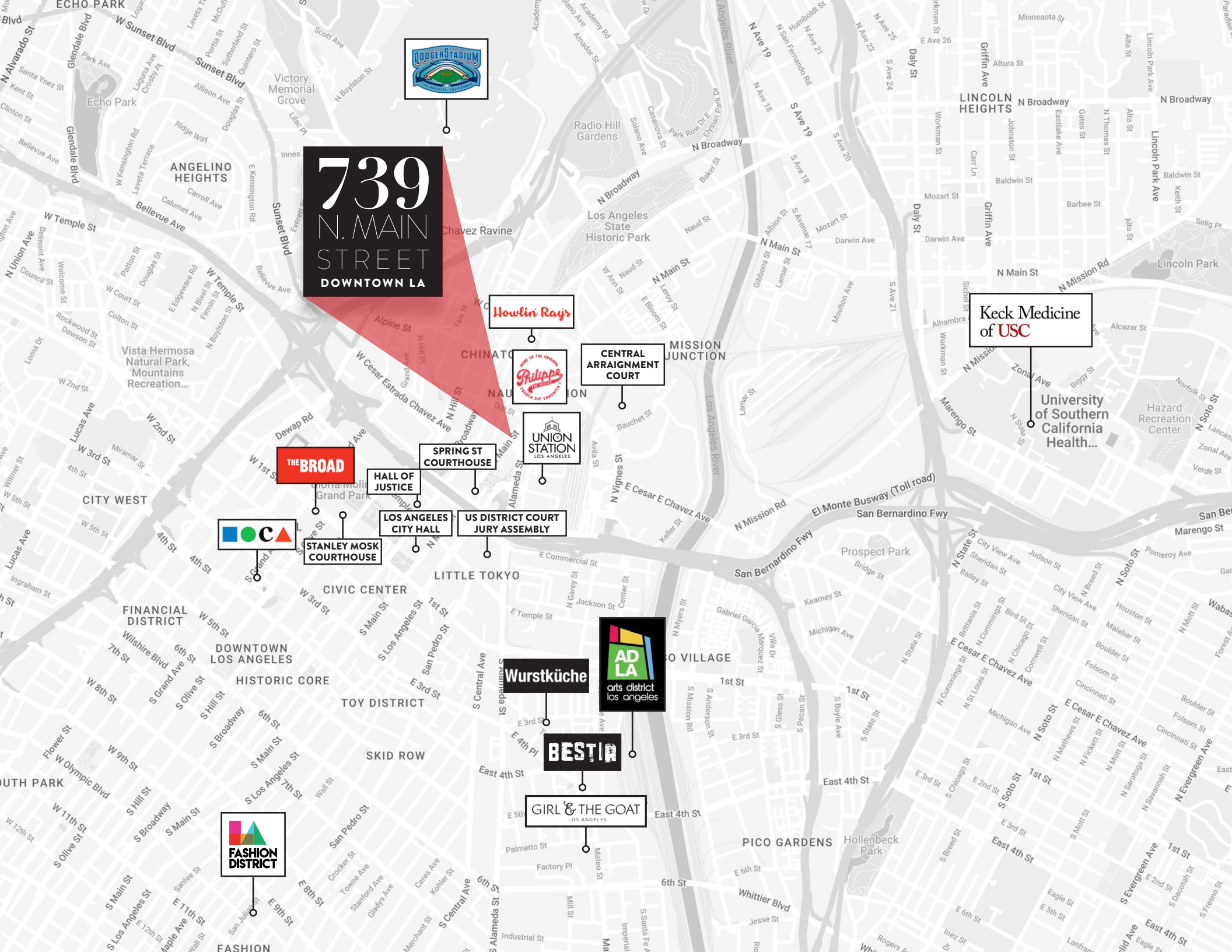


Wurstküche



BESTIA

GIRL & THE GOAT LOS ANGELES



739

N. MAIN
STREET
DOWNTOWN LA



ZACUTO GROUP
COMMERCIAL REAL ESTATE

JAKE ZACUTO

Managing Director

310.469.9012

jake@zacutogroup.com

BRE #01377441

ANDREW SINASOHN

Executive Vice President

310.469.9023

andrew@zacutogroup.com

BRE #01951740

GABE HISEM

Senior Director

231.631.2327

gabe@zacutogroup.com

BRE #02187347

No warranty, express or implied, is made as to the accuracy of the information contained herein. This information is submitted subject to errors, omissions, change of price, rental or other conditions, and withdrawal without notice. All parties who receive this material should not rely on it but should use it as a starting point of analysis and should independently confirm the accuracy of the information contained herein through a due diligence review of the books, records, files and documents that constitute reliable sources of the information described herein. Logos and images are for identification purposes only and may be trademarks of their respective companies. All terms provided are approximate. Lessee to verify. 9/2023

ZACUTOGROUP.COM | 310-469-9300



2ND FLOOR

739 N MAIN STREET, LOS ANGELES, 90012





739
N. MAIN
STREET
DOWNTOWN LA